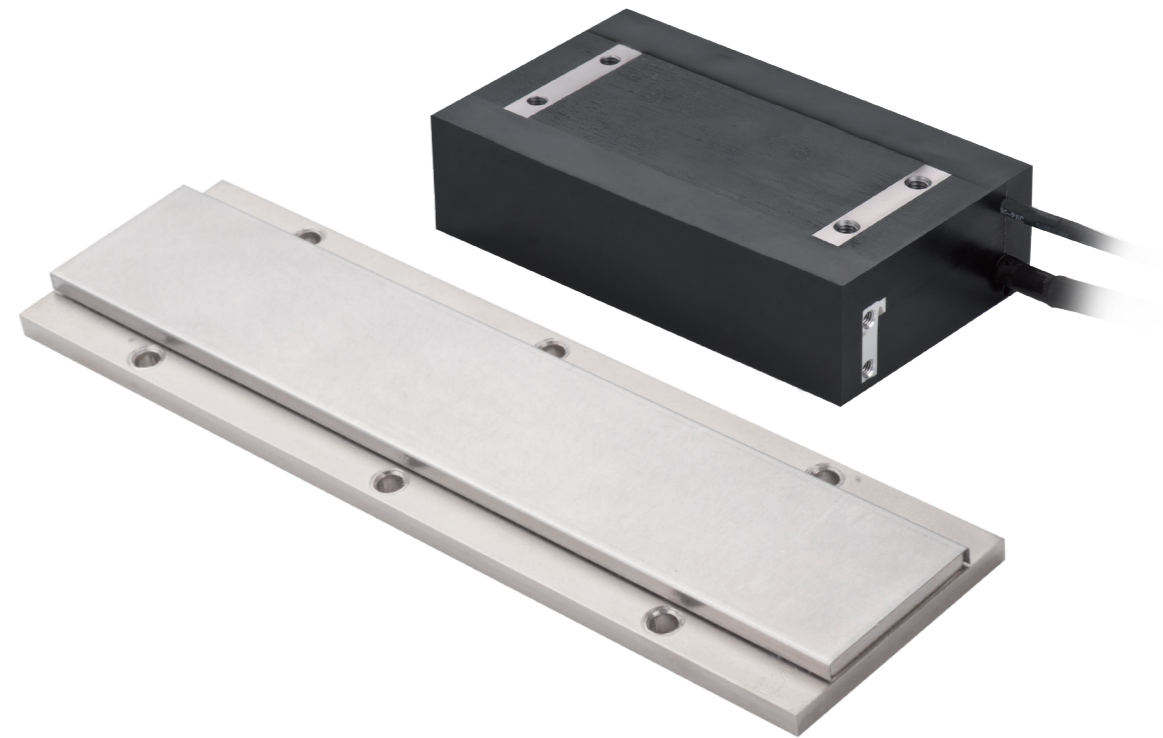


Specifications

	Symbol	Unit	LMSS11
Electrical Specifications			
Continuous force(@120°C)	Fc	N	95
Continuous current(@120°C)	Ic	A(rms)	2.7
Peak force for 1 sec.	Fp	N	263
Peak current for 1 sec.	Ip	A (rms)	10.8
Force constant	Kf	N/A (rms)	35
Attraction force	Fa	N	311
Max. winding temp.	Tmax	°C	120
Electrical time constant	Ke	ms	3.8
Resistance (line to line at 25°C)	R25	Ω	6.2
Resistance (line to line at 120°C)	R120	Ω	8.2
Inductance (line to line)	L	mH	23.5
Pole pair pitch	2τ	mm	20
Minimum bending radius of cable	-	mm	39
Back emf constant(line to line)	Kv	Vrms/(m/s)	20.2
Motor constant(at 25°C)	Km	N/VV	11.5
Thermal resistance	Rth	°C/W	1.05
Thermal time constant	Tth	s	465
Thermal switch	-	-	3 PTC 120 In Series
Max. DC bus voltage	-	V	600
※All the electrical specifications in the table are in ±10% of tolerance.			
Mechanical Specifications			
Mass offorcer	Mf	kg	0.6
Unit mass of stator	Ms	kg/m	1.9

HIWIN®



HIWIN®

HIWIN MIKROSYSTEM CORP.

No.6, Jingke Central Rd.,
Taichung Precision Machinery Park,
Taichung 40852, Taiwan
Tel: +886-4-23550110
Fax: +886-4-23550123
www.hiwinmikro.tw
business@hiwinmikro.tw

Global Sales And Customer Service Site

HIWIN GmbH

OFFENBURG, GERMANY
www.hiwin.de
www.hiwin.eu
info@hiwin.de

HIWIN Schweiz GmbH

JONA, SWITZERLAND
www.hiwin.ch
info@hiwin.ch

HIWIN KOREA

SUWON · CHANGWON, KOREA
www.hiwin.kr
info@hiwin.kr

HIWIN JAPAN

KOBE · TOKYO · NAGOYA · NAGANO ·
TOHOKU · SHIZUOKA · HOKURIKU ·
HIROSHIMA · FUKUOKA · KUMAMOTO,
JAPAN
www.hiwin.co.jp
info@hiwin.co.jp

HIWIN s.r.o.

BRNO, CZECH REPUBLIC
www.hiwin.cz
info@hiwin.cz

HIWIN CHINA

SUZHOU, CHINA
www.hiwin.cn
info@hiwin.cn

HIWIN USA

CHICAGO, U.S.A.
www.hiwin.com
info@hiwin.com

HIWIN SINGAPORE

SINGAPORE
www.hiwin.sg
info@hiwin.sg

Mega-Fabs Motion Systems, Ltd.

HAIFA, ISRAEL
www.mega-fabs.com
info@mega-fabs.com

HIWIN Srl

BRUGHERIO, ITALY
www.hiwin.it
info@hiwin.it

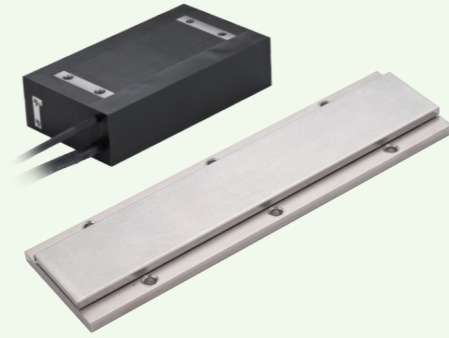
LMSS11 Series Linear Motor

Features

- Short length design to reduce stroke
- Optimized cogging force
- Insulation Class F

Application

General automation, PCB, Inspection, Semiconductor



LMSS11 Highlights

15m/s ↑
Velocity

20G ↑
Acceleration

100mm ↓
Forcer length

Model Description

Forcer

Primary part

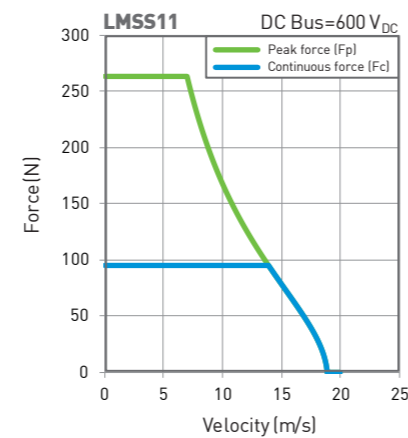
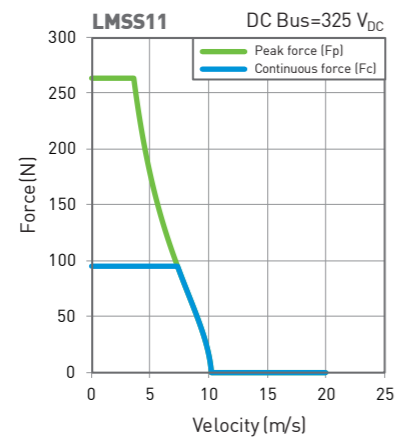
Series	Type	Width of forcer	Length of forcer
LM	SS	1	1
Linear motor	Linear motor type	1: 54mm	1: 96mm

Stator

Magnet track

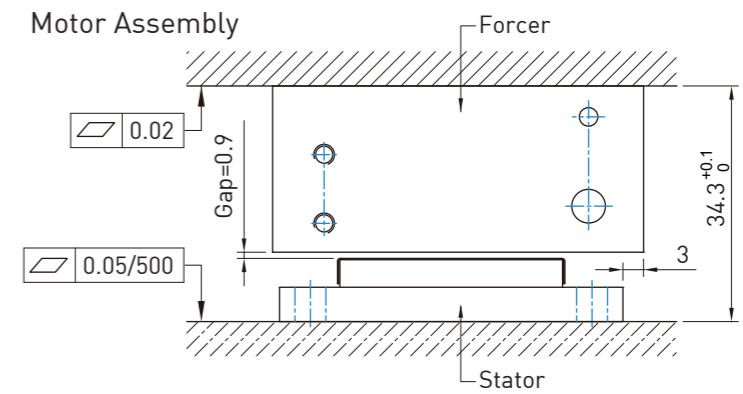
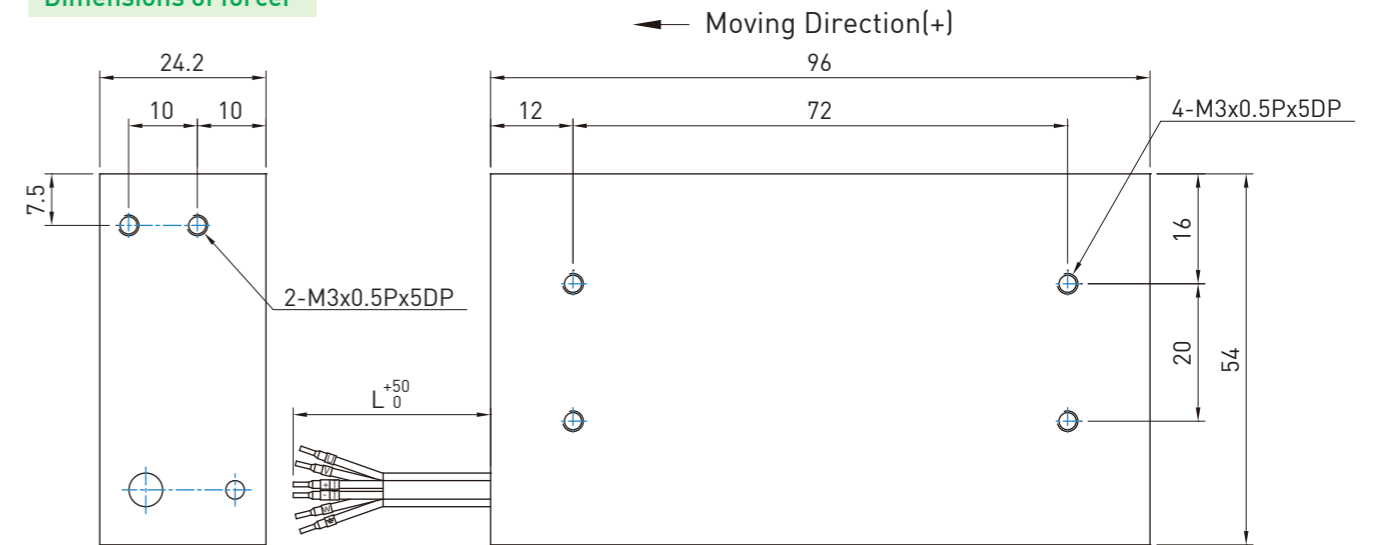
Series	Width of stator	Model	Length of stator
LMSS	1	S	1
Linear motor	1: 50mm	Standard	1: 80mm 2: 200mm

F-V curves

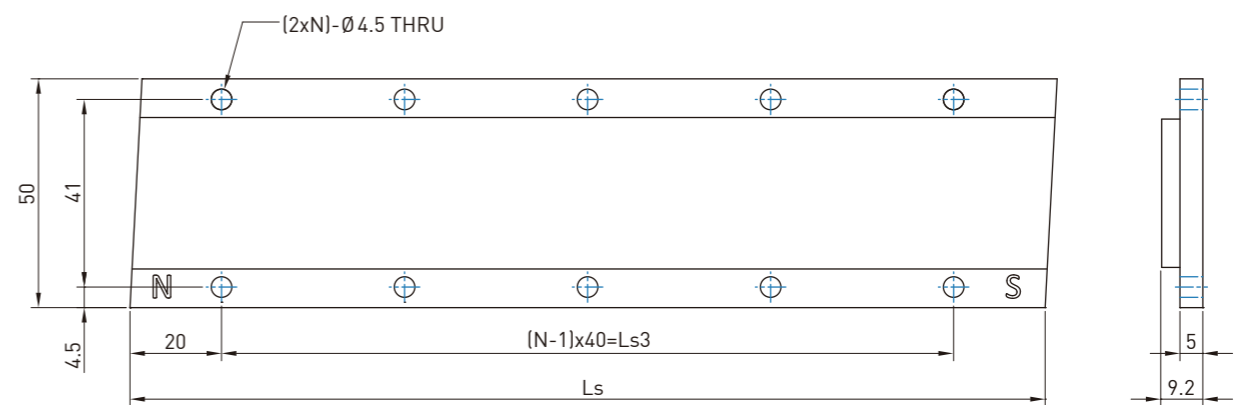


Product Dimension

Dimensions of forcer



Dimensions of stator



Stator P/N:	Ls	N	Ls3
LMSS1S1	80	2	40
LMSS1S2	200	5	160

※ The specifications in this catalog are subject to change without notification.