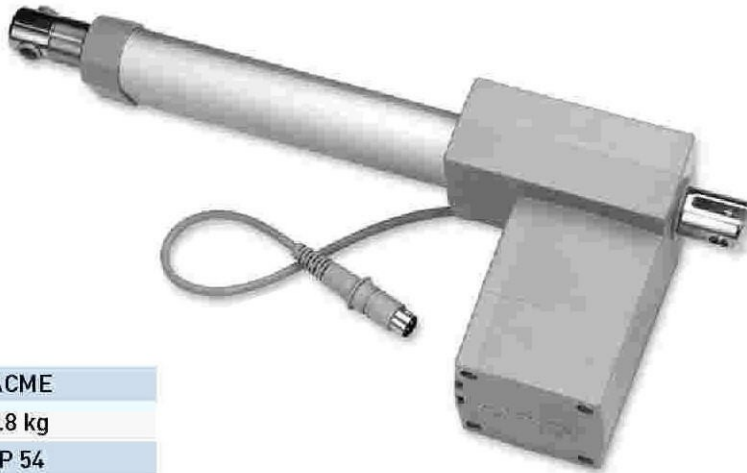


HIWIN LAM Series (2)

LAM3

CE



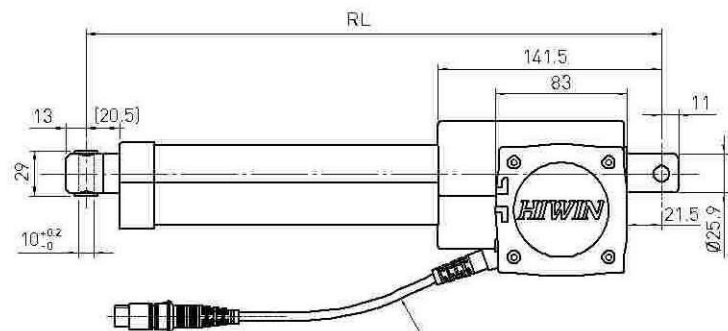
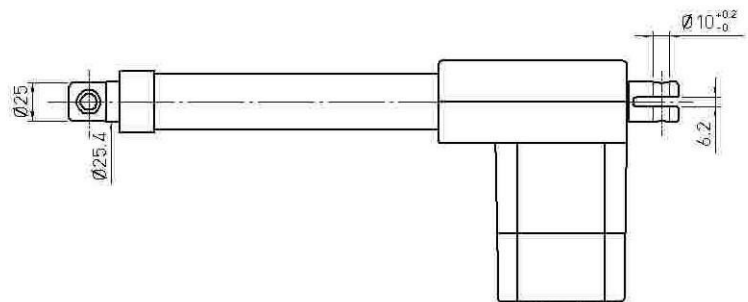
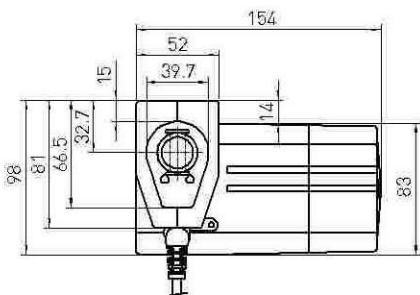
Screw type	ACME
Weight*	2.8 kg
Protection	IP 54
Compatible controller	LAK2D/LAK2B LAK4/LAK6B
Working temp	+5°C ~40°C

* Stroke length 200 mm

* Option: [1]IP 66

- [2]Safety Nut [RL=S+183]
- [3]Back fixture turned 90°

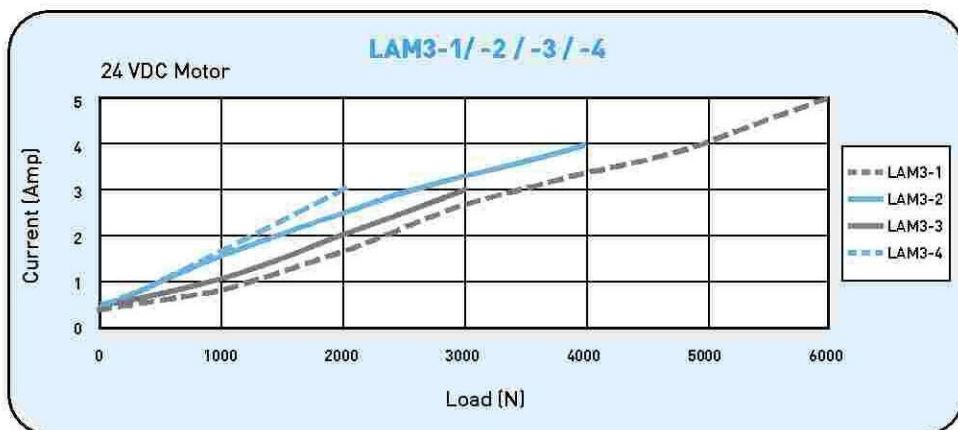
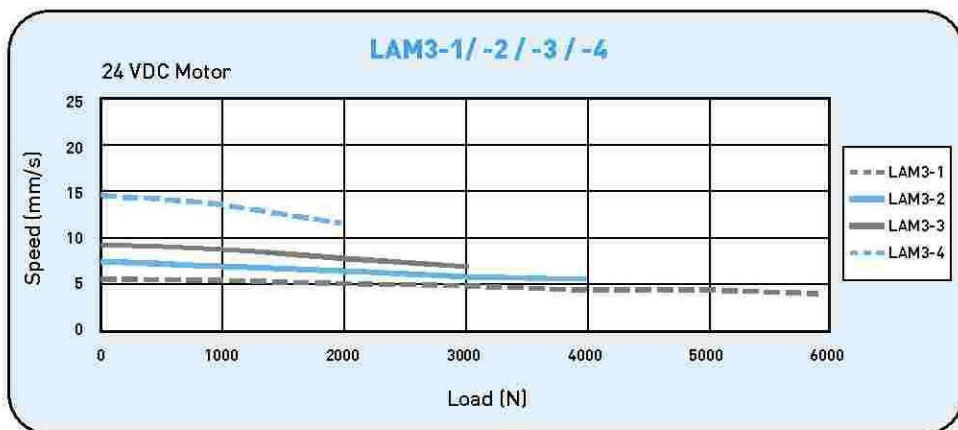
- RL=S+171
- RL:Retracted length
- S:Stroke length



MOTOR CABLE
LENGTH=200mm
DIAMETER=Ø5.5

● LAM3 Specifications

Model	Thrust max. (N)	Pulling max. (N)	Holding max. (N)	Speed (mm/s)		Standard stroke (mm) : S							Duty cycle %	Max.current (A)
				Load=Max.	Load=0	100	150	200	250	300	350	400		24VDC
LAM3-1	6000	5000	5000	4	5.5	100	150	200	250	300	350	400	10	6
LAM3-2	4000	4000	4000	5.5	7.5	100	150	200	250	300	350	400	10	5
LAM3-3	3000	3000	3000	7	9	100	150	200	250	300	350	400	10	4
LAM3-4	2000	2000	1500	11.5	14.5	100	150	200	250	300	350	400	10	4



Note: The test results are obtained by using 24VDC power supply.

● Ordering Information

