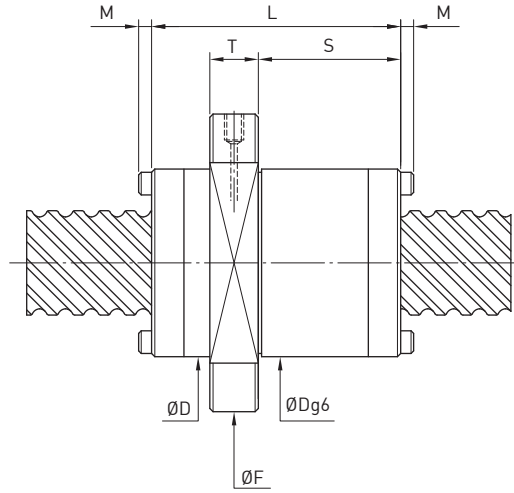
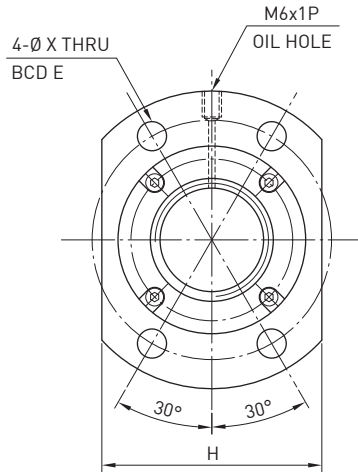


**F S H TYPE**


Model	Size		Ball Dia.	PCD	RD	Circuits	Stiffness kgf / $\mu\text{m}$ K	Dynamic Load $1 \times 10^6$ revs C (kgf)	Static Load Co (kgf)	Nut		Flange				Bolt		Fit	
	Nominal Dia.	Lead								D	L	F	T	BCD-E	H	X	S	M	
15-20S1	15	20	3.175	15.6	12.324	1.8x1	18	543	917	34	45	55	10	45	36	5.5	24	0	
16-16S2	16	16		16.6	13.324	1.8x2	35	860	1690	32	48	53	10	42	38	4.5	26	0	
16-16S4				16.6	13.324	1.8x4	68	1570	3370	33	48	58	10	45	38	6.6	26	0	
16-16S2				16.6	13.324	1.8x2	35	860	1690	33	48	58	10	45	38	6.6	26	0	
16-16S4				16.6	13.324	1.8x4	68	1570	3370	33	48	58	10	45	38	6.6	26	0	
20-20S2	20	20		20.6	17.324	1.8x2	42	970	2120	39	48	62	10	50	46	5.5	27.5	0	
20-20S2				20.6	17.324	1.8x2	42	970	2120	38	58	62	10	50	46	5.5	32.5	3	
20-20S4				20.6	17.324	1.8x4	81	1760	4240	38	58	62	10	50	46	5.5	32.5	3	
25-25S2				25	25	25.8	21.744	1.8x2	53	1470	3410	47	67	74	12	60	56	6.6	39.5
25-25S4	25.8	21.744				1.8x4	105	2670	6830	47	67	74	12	60	56	6.6	39.5	3	
32-32S2	32	32	4.763	33	28.132	1.8x2	66	2090	5200	58	85	92	15	74	68	9	48	0	
32-32S4				33	28.132	1.8x4	128	3800	10400	58	85	92	15	74	68	9	48	0	
40-40S2	40	40	6.350	41.4	34.91	1.8x2	82	3420	8740	72	102	114	17	93	84	11	60	0	
40-40S4				41.4	34.91	1.8x4	159	6220	17480	72	102	114	17	93	84	11	60	0	
50-50S2	50	50	7.938	51.8	43.688	1.8x2	100	5030	13280	90	125	135	20	112	104	14	83.5	0	
50-50S4				51.8	43.688	1.8x4	193	9110	26560	90	125	135	20	112	104	14	83.5	0	

Remark : Stiffness values listed above are derived from theoretical formula while preload is 5% of dynamic load rating.