

Industrial Robot



High Speed
High Precision
Multifunctional Integration
Ecology First
Humanistic Technology

HIWIN TECHNOLOGIES CORP.

No. 7, Jingke Road,
Taichung Precision Machinery Park,
Taichung 40852, Taiwan
Tel :+886-4-23594510
www.hiwin.tw
business@hiwin.tw

Subsidiaries & R&D Centers

HIWIN GmbH
www.hiwin.de

HIWIN SCHWEIZ
www.hiwin.ch

HIWIN KOREA
www.hiwin.kr

HIWIN JAPAN
www.hiwin.co.jp

HIWIN FRANCE
www.hiwin.fr

Mega-Fabs Motion Systems
www.mega-fabs.com

HIWIN USA
www.hiwin.com

HIWIN Srl
www.hiwin.it

HIWIN s.r.o.
www.hiwin.cz

HIWIN SINGAPORE
www.hiwin.sg

Articulated Robot

RA605

Specification

Degrees of freedom	6	
Nominal load capacity	5kg	
Motion Range	Maximum reach radius	710mm (Point P)
	J1	±165°
	J2	+85°~-125°
	J3	+185°~-55°
	J4	±190°
	J5	±115°
J6	±360°	
Position repeatability	±0.02mm	
Cycle time*	0.5s	
Weight	40kg	
Controller	RCA605	
Installation	floor, ceiling and wall-mounted	

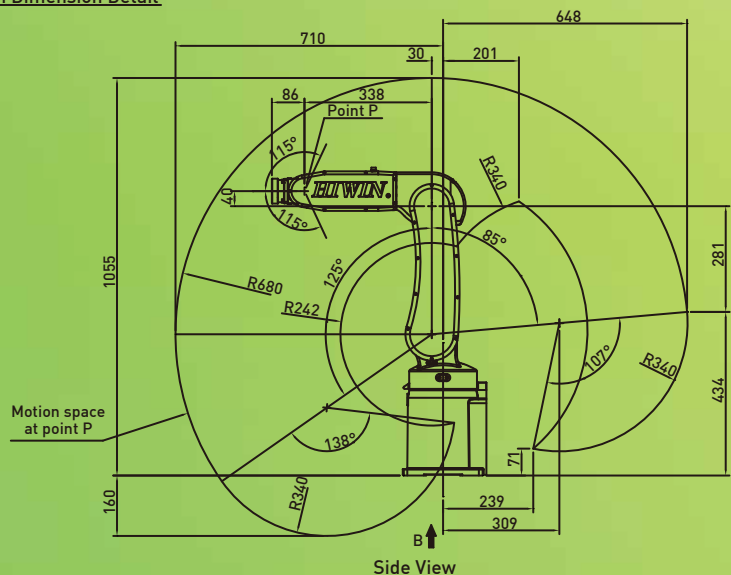
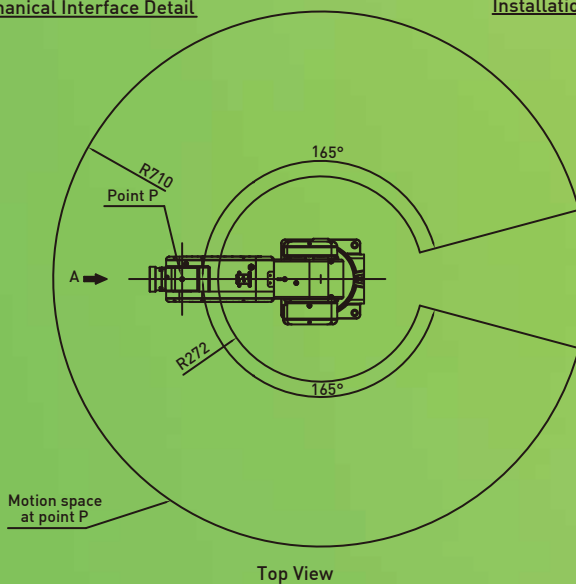
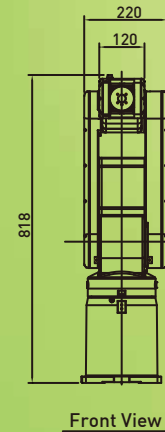
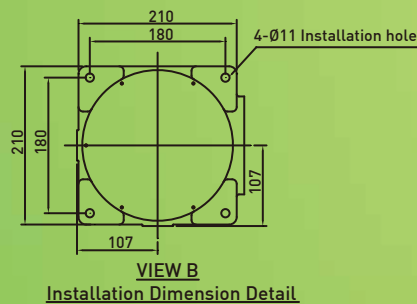
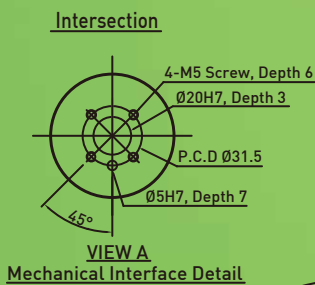
Features

- A compact and agile 6-axis jointed-arm robot for precise assembly, part transfer and workpiece loading/unloading.
- Applications include: pick-and-place, handling, assembly, deburring, grinding and polishing.

* Cycle time is based on a reciprocating movement over a vertical distance of 25 mm and a horizontal distance of 300 mm. Actual cycle time will depend on operating conditions.



External Dimensions / Motion Range



Delta Robot

RD401

Specification

Degrees of freedom	4	
Nominal load capacity	1kg	
Motion Range	Horizontal stroke	420mm
	Vertical stroke	150mm
Position repeatability	±0.05mm	
Cycle time*	0.3s	
Weight	80kg	
Controller	RCD401	
Installation	ceiling mount	

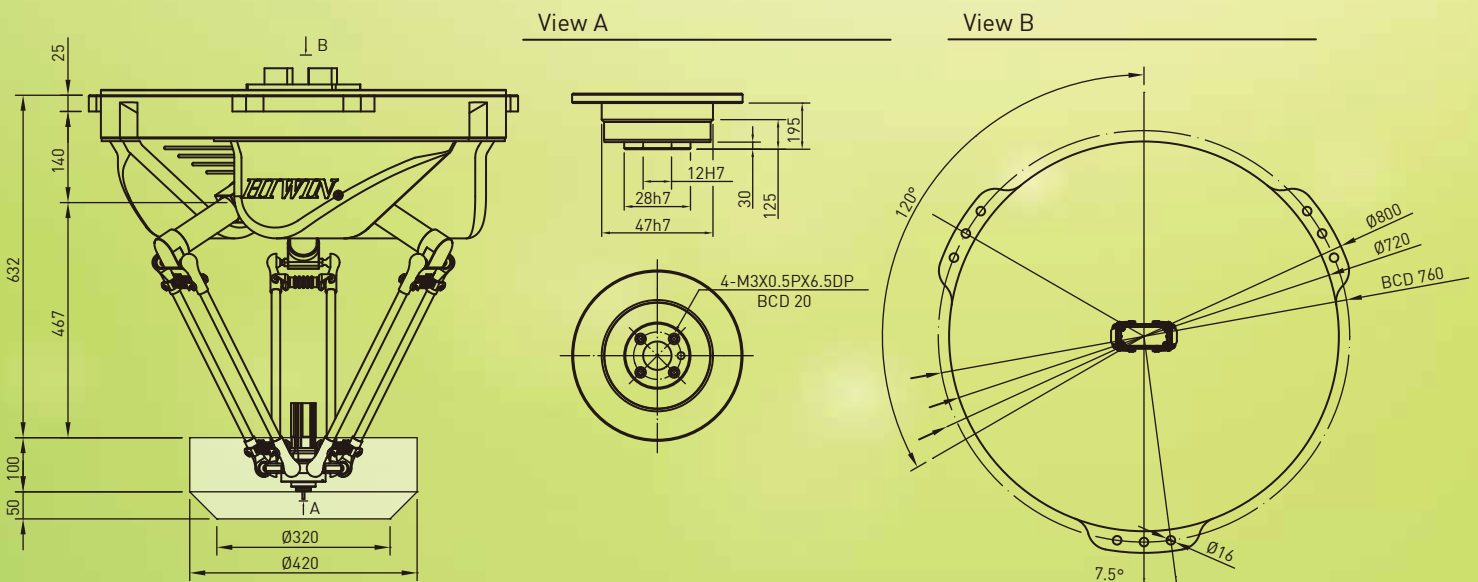
* Cycle time is based on a reciprocating movement over a vertical distance of 25 mm and a horizontal distance of 300 mm. Actual cycle time will depend on operating conditions.



Features

- A 4-axis parallel robot utilizing a parallel linkage mechanism to perform extremely high speed motions with stability and high accuracy.
- Applications include: pick-and-place, assembly, alignment and packaging.

External Dimensions / Motion Range



Delta Robot

RD403

Specification

Degrees of freedom	4	
Nominal load capacity	3kg	
Motion Range	Horizontal stroke	1300mm
	Vertical stroke	500mm
Position repeatability	±0.1mm	
Cycle time*	0.3s	
Weight	165kg	
Controller	RCD403	
Installation	ceiling mount	

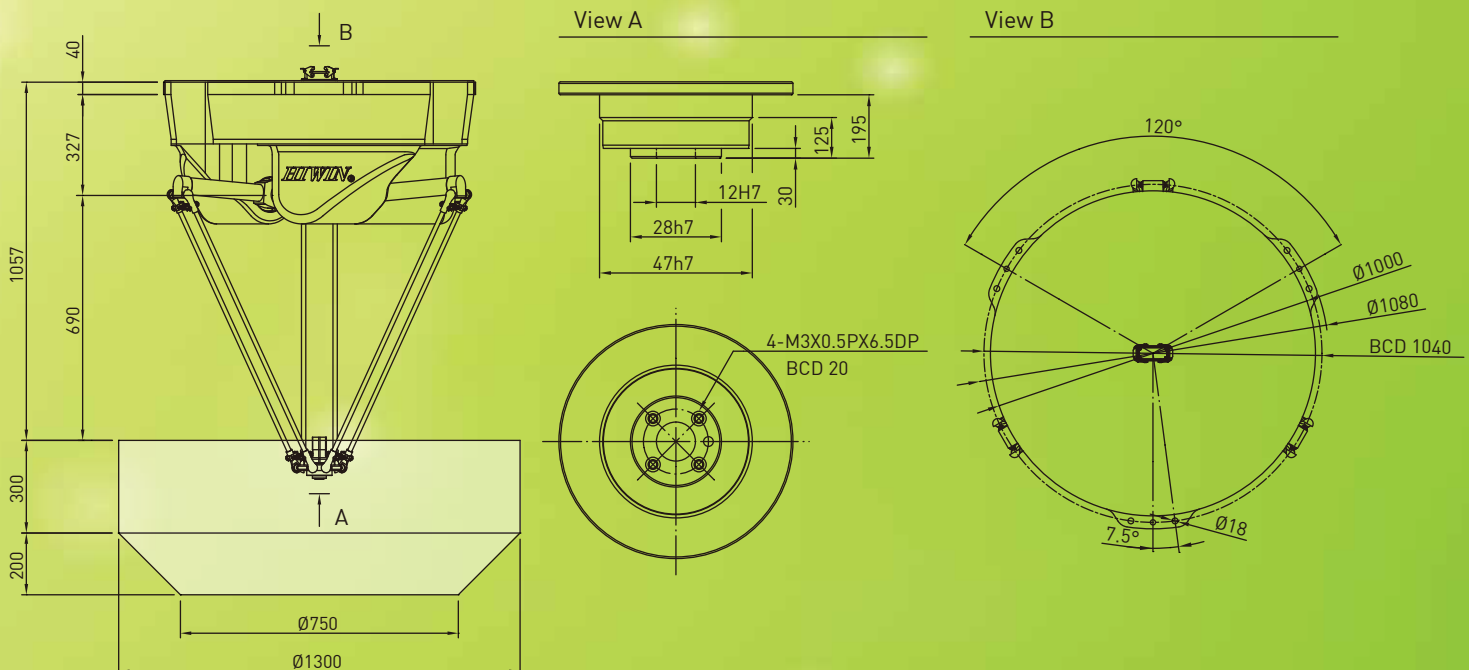
* Cycle time is based on a reciprocating movement over a vertical distance of 25 mm and a horizontal distance of 300 mm. Actual cycle time will depend on operating conditions.



Features

- A 4-axis parallel robot utilizing a parallel linkage mechanism to perform extremely high speed motions with stability and high accuracy.
- Applications include: pick-and-place, assembly, alignment and packaging.

External Dimensions / Motion Range



Movable Parallel Robot

RK401

Specification

Degrees of freedom	4	
Nominal load capacity	1kg	
Motion Range	Horizontal stroke	560mm
	Vertical stroke	670mm
Position repeatability	±0.05mm	
Cycle time*	0.3s	
Weight	50kg (without controller)	
Controller	RCK401	
Installation	floor, ceiling	

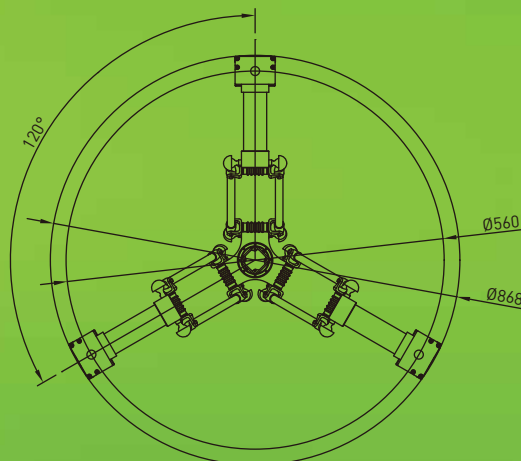
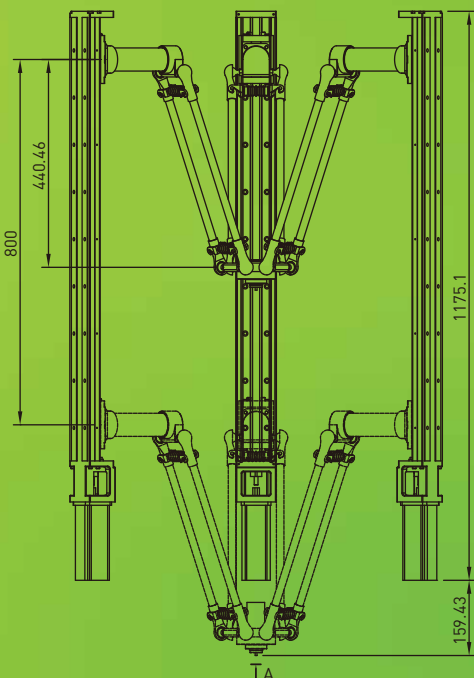


* Cycle time is based on a reciprocating movement over a vertical distance of 25 mm and a horizontal distance of 300 mm. Actual cycle time will depend on operating conditions.

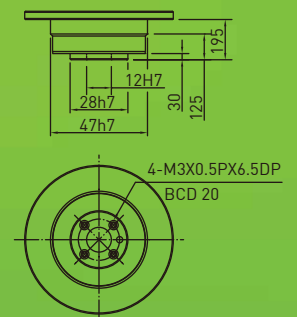
Features

- A 4-axis parallel robot utilizing a parallel linkage mechanism to perform extremely high speed motions with stability and high accuracy.
- Applications include: pick-and-place, assembly, alignment and packaging.

External Dimensions / Motion Range



View A



SCARA

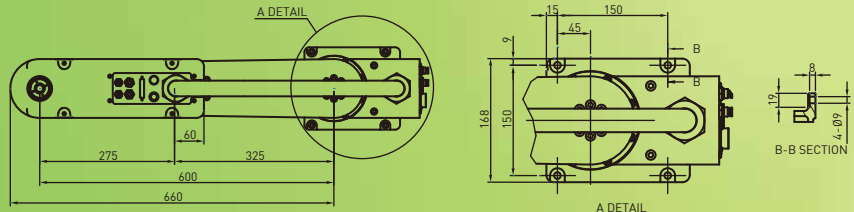
RS406

Specification

Robot Type		RS406-600	
Degree of Freedom		4	
Payload	Rated	kg	2
	Maximum		6
Reach		mm	600
Joint Range	J1	deg	±130
	J2	deg	±150
	J3	mm	200
	J4	deg	±360
Standard Cycle Time*		sec	0.39
Repeatability	J1+J2	mm	±0.02
	J3	mm	±0.01
	J4	deg	±0.01
Z-Axis Shaft Diameter		mm	20
J3(Z-Axis) Push Force		N	100
Allowable Initial Moment	Rated	kg-m ²	0.01
	Maximum		0.12
I/O Channels		7 output point / 8 input point	
User Tubing		Ø4×2, Ø6×2	
Weight		kg	17(Not Included controller)



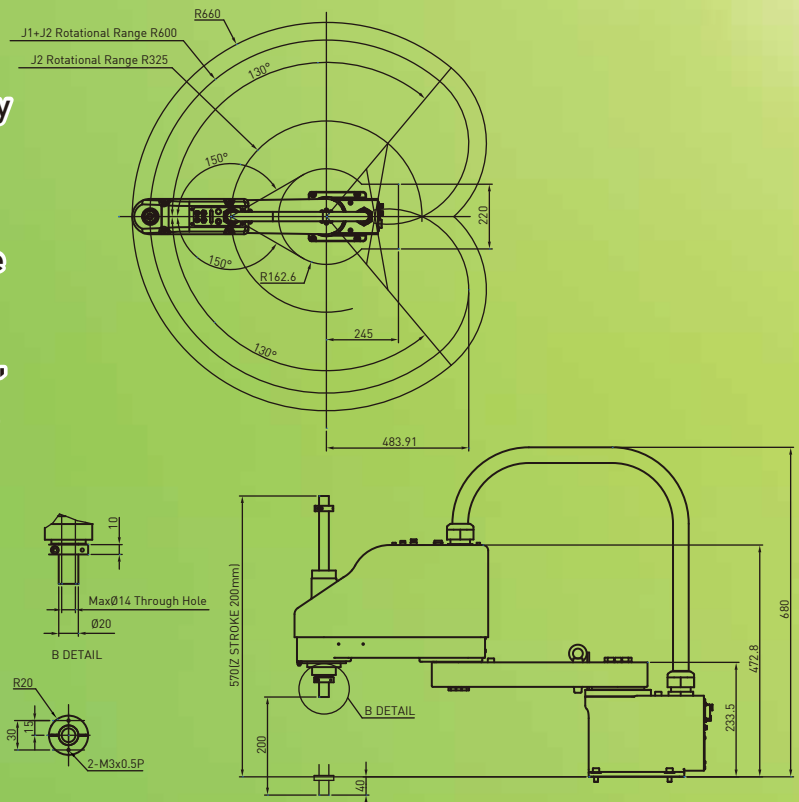
External Dimensions / Motion Range



Features

- SCARA[Selective Compliance Assembly Robot Arm]
- SCARA provides an excellent solution for rapid motion in the horizontal plane for pick and place and assembly applications. Widely used in the plastic, automobile, electronic pharmaceutical and food industries.
- Mounting Position : Floor or Wall

* Cycle time is based on a reciprocating movement over a vertical distance of 25 mm and a horizontal distance of 300 mm. Actual cycle time will depend on operating conditions.



Wafer Robot

Specification

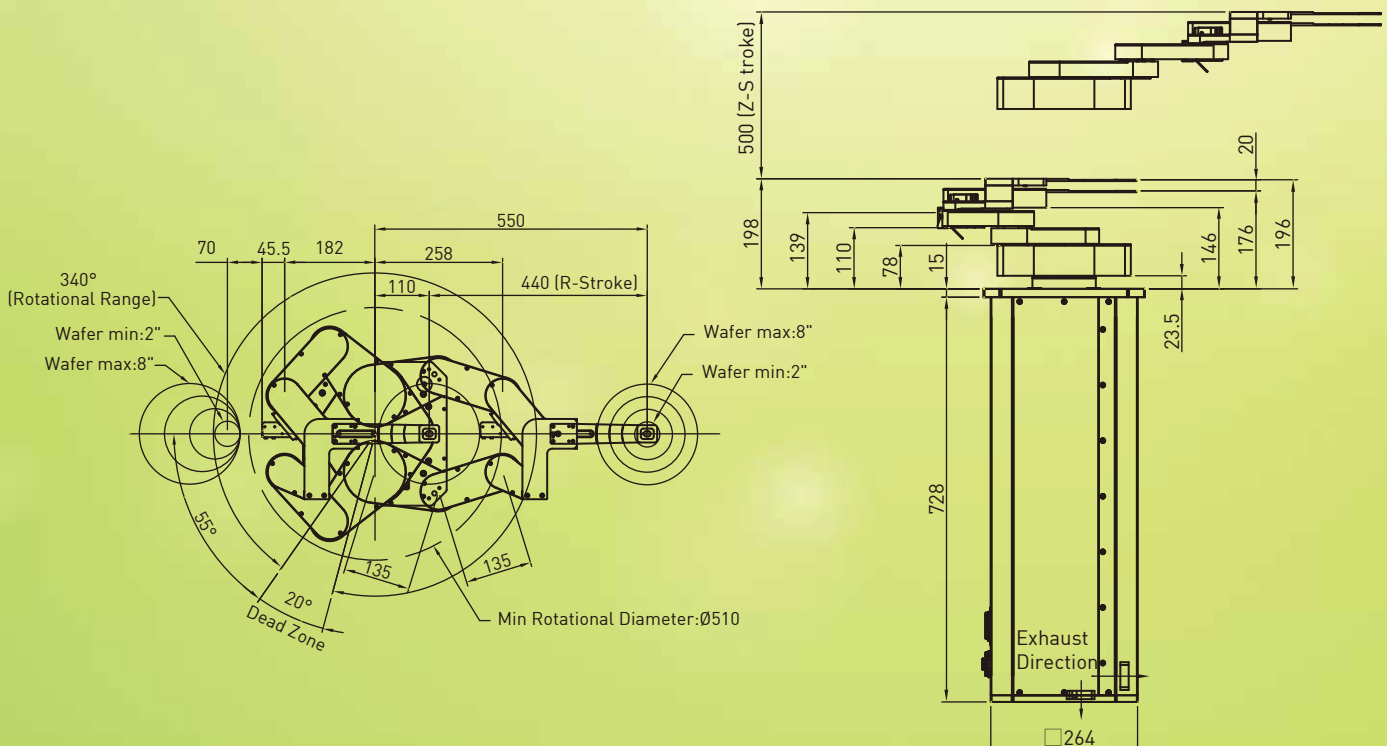
Z-Axis	Stroke	500mm
	Velocity	250mm/s
T-Axis	Turning Range	0°~340°
	Angular Velocity	360° /s
R-Axis	Stroke	420mm
	Velocity	900mm/s
	Weight	Approx. 48kg
	Cleanliness	ISO Class 2 (ISO 14644)
	MTBF	60,000hrs
	Top Mount Plate	290x290mm ²
	Operating Temperature	10~40°C
	Repeatability	± 0.02mm
	Payload Capacity	0.5Kg
	Control interfaces	RS-232,I/O
	Vacuum Require	-40kPa ~ -55kPa, Ø6
	Power Supply	Single-Phase AC110V/AC220V



Features

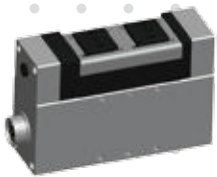
- **Product Description:** According to customer needs to provide the robot with the key components of the customized. (Eg, linear guideways, ball screw, Torque motor, AC servo motor, controller ... etc.)
- **Applications include:** Automatic wafer transfer and positioning.

External Dimensions / Motion Range

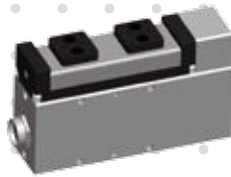


Electric Gripper

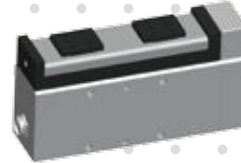
XEG-16



XEG-32



XEG-64



XEG-C1



Features

- Uses the closed-loop control of a stepper motor combined with an encoder.
- The gripping transmission is a single axis robot that utilizes a ballscrew.
- Adjustable gripping force, position, velocity and acceleration.
- The gripper's compact size offers high speed, accuracy, stiffness and efficiency.

Specification

Model	Stroke/ both sides (mm)	Gripper Force (N)	Repeatability (mm)	Opening/ closing speed (mm/s)	Weight (kg)
XEG-16	16	5~50	± 0.01	1~60	0.34
XEG-32	32	15~150	± 0.01	1~80	0.63
XEG-64	64	90~450	± 0.01	1~100	1.85

Controller Model	Power Supply (V)	Total Current (A)	Weight (kg)
XEG-C1	DC24V±10%	3A MAX	0.14